

Peacefulness	★★★★☆
View	★★★★☆
Living room	★★★★☆
Rooms	★★★★☆
Bathrooms	★★★★☆
Kitchen	★★★★☆



Located in the middle of the Chianti, "Colli Senesi" countryside, on a hill, high about 400 mt. above the sea level; L'Ulivella is an ancient 13th century estate situated on a hillside that overlooks the valley below. The property consists of three independent cottages that are attached to each other, L'Ulivella, Il Cassio and the third property which belongs to the owners, and is therefore occupied and not to let.

Decoratively, the entire estate is very refined and has been delightfully restored.

L'Ulivella is a perfectly restored two-storey brick and stone Italian cottage with direct access to the garden. Its classic antique furniture and exposed wooden beams are typical of an exclusive estate in Tuscany. Accommodation extends to four persons when L'Ulivella is rented alone.

There is a communal heated swimming pool (heated from May - Sept) (6x12m) that is fully equipped with sun-beds, chairs and sun-umbrellas, with a splendid view of the garden.

Unpaved road for about 1 km. Nearest local centre: about 350 meters.

Ground Floor

The ground floor houses a well appointed and fully equipped kitchen. The kitchen has all modern conveniences such as an oven, refrigerator, and dishwasher with an open plan sitting area and fireplace.

There is a further large living & dining room with an extendible table.

The ground floor has 1 small W.C.

First Floor

1 bedroom with a queen-size bed.

1 bedroom with 2 twin-size beds.

1 bathroom with a Jacuzzi bathtub.

Beds & Baths

Sleeps up to 4 adults. (2 bedrooms & 2 baths)
One bedroom with a queen-size bed. One bedroom with 2 twin-size beds. One bathroom with a Jacuzzi bathtub. Ground floor has 1 small W.C.

Living Space

Fully equipped kitchen with all modern conveniences such as an oven, refrigerator, and dishwasher with an open plan sitting area and fireplace. Large living & dining room with an extendible table.

Outdoors

Shared heated swimming pool (heated from May - Sept) (6x12m) that is fully equipped with sun-beds, chairs and sun-umbrellas, with a splendid view of the garden.

Household Essentials

Fully equipped kitchen with all modern conveniences such as an oven, refrigerator, microwave and dishwasher. T.v, Satellite Tv, Stereo and barbecue.

Notable Features

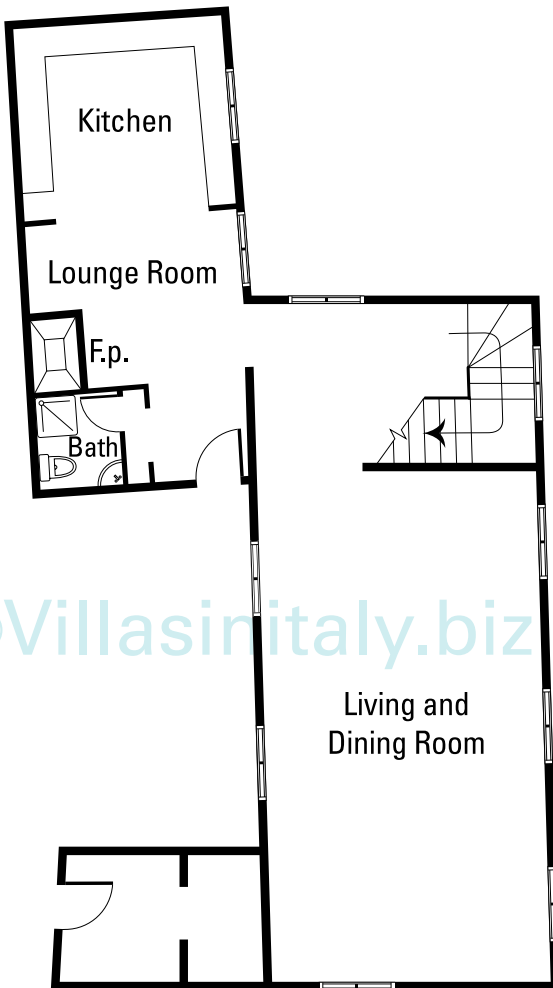
- ancient 13th century estate
- nicely decorated
- Heated heated swimming pool

Nearby General Info

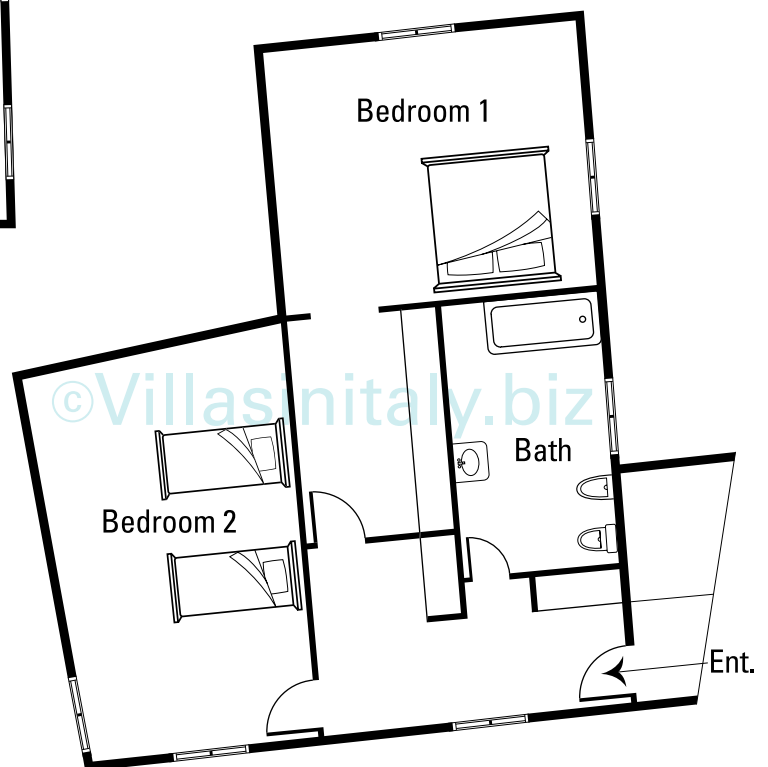
Mini market and Supermarket close by. Restaurants and bank (5 kms). Train station (15 kms). Arezzo (50 kms), S. Gimignano, Florence and Greve Chianti (130 kms). Near Umbria region.

Outdoor Activities

Golf, Tennis, Trekking, Fishing and SPA.



L'Ulivella - Ground Floor



L'Ulivella - First Floor